

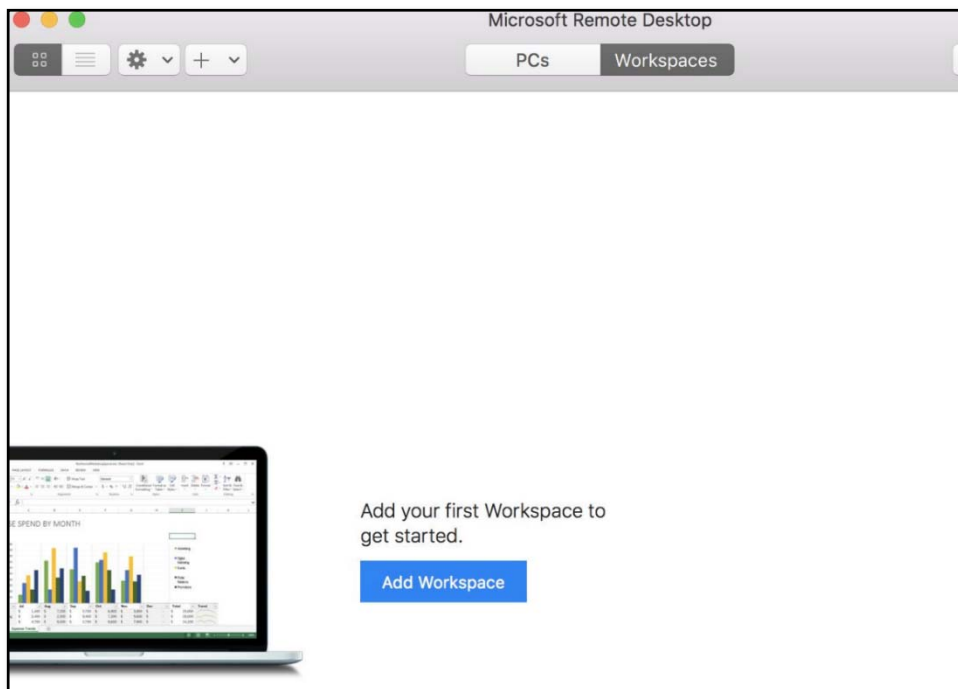
# Accessing Your Ashton Desktop from a Mac – March 2020

To download this app you need iOS 13.0 or later.  
You can either search via Safari or the Apple Apps store

If you search for 'Microsoft Remote Desktop 10' in the app store it should be amongst the top results.

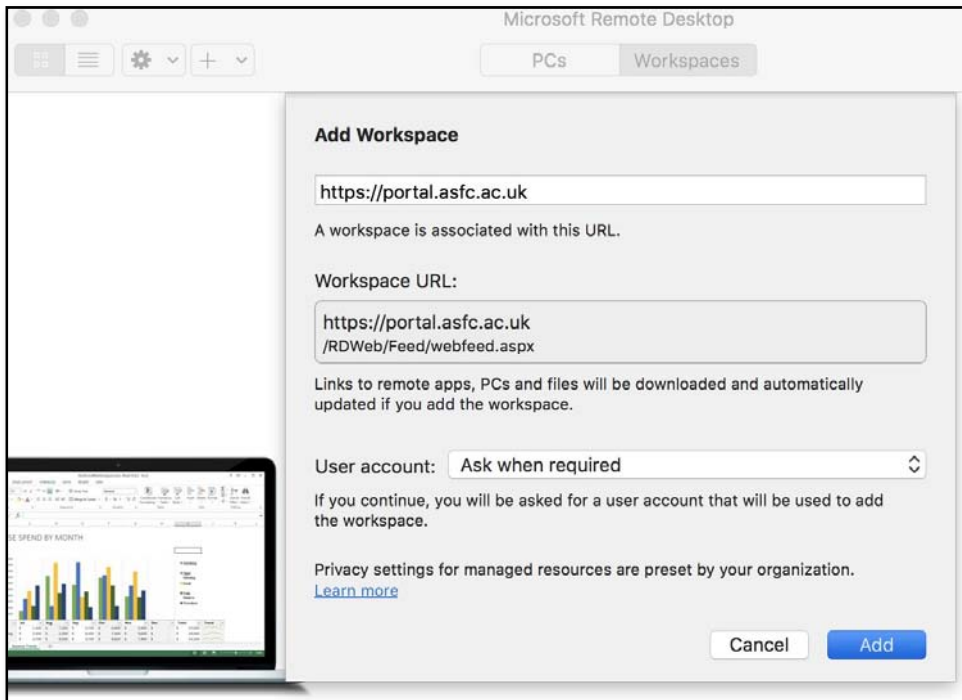


Install and open the "Microsoft Remote Desktop 10" app and you should see a window similar to the next screenshot. You may have to select "Workspaces" from the menu at the top.

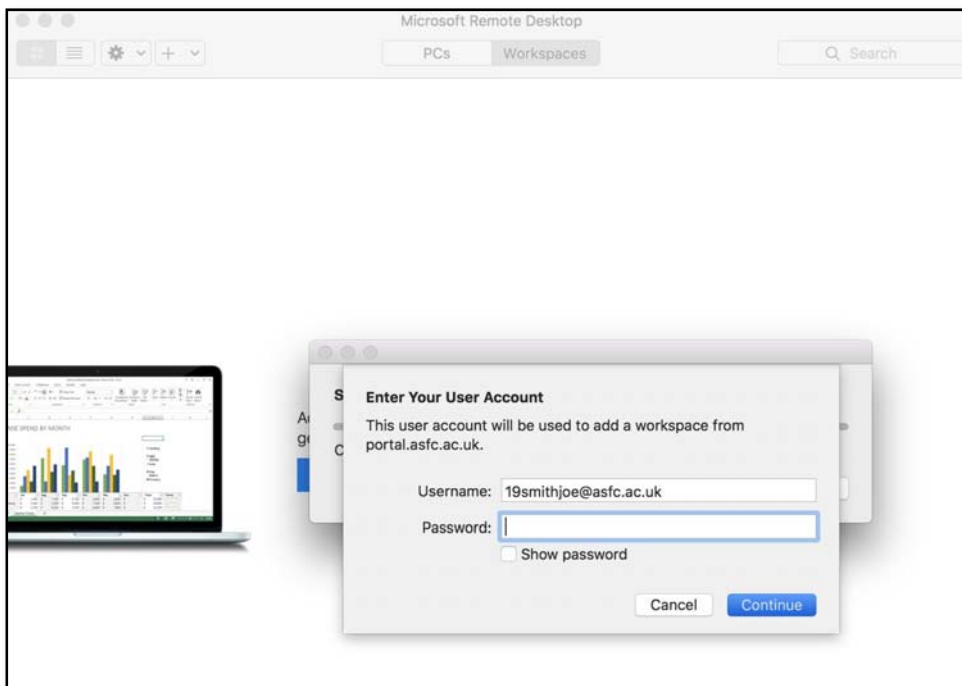


Click the blue Add Workspace button

The following screen will appear. You will need to enter <https://portal.asfc.ac.uk> in the “Add Workspace” box near the top of the window, the workspace URL should auto complete and the use account option can be left at “Ask when required”.



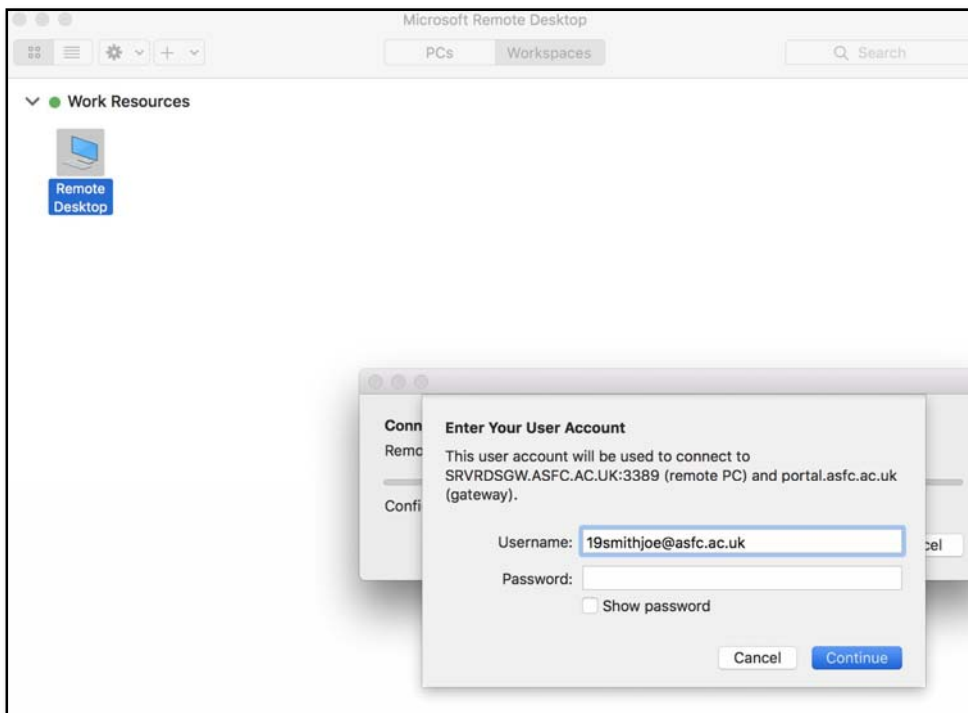
When prompted to “Enter Your User Account” enter your username in the form of an email address with your usual college password.



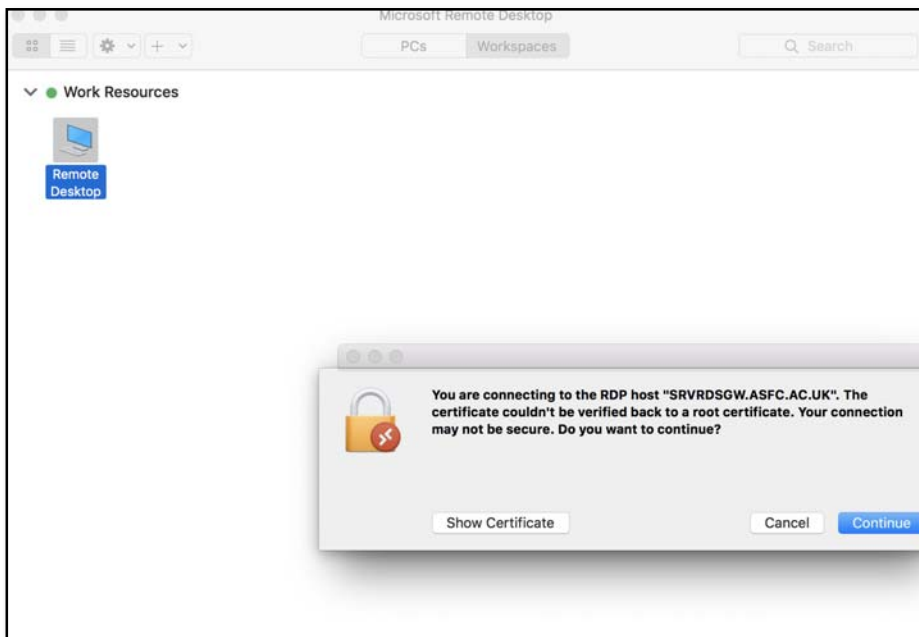
The previous steps have now setup Remote Desktop shortcut that will continue to be available on the machine you have used to create the connection.



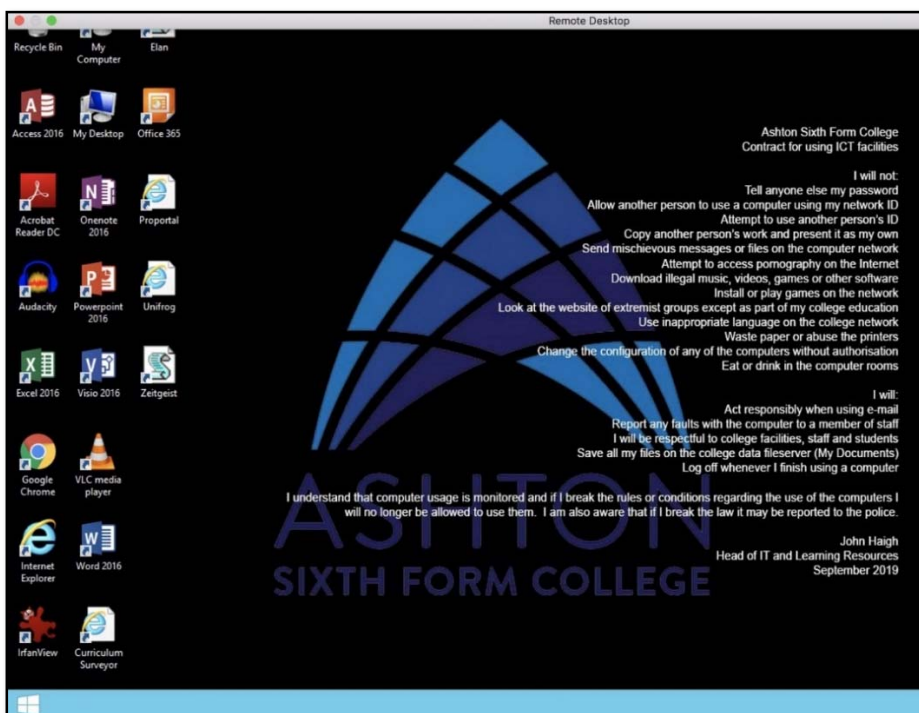
Click the Remote Desktop shortcut and you should now be presented with a screen asking you to login with your user account, supply the relevant password and click continue.



After a few moments the following screen will appear click “continue”.



Once the connection is established your desktop will appear.



At the end of your session, log off as normal.